

Constituted as Down County Committee in accordance with GAA Official Guide (An Treoir Oifigiúil).
 County Bye-Laws; GAA Governance Code & Risk Register; 15 Core County Policies; Officer Responsibilities; and Remit & Responsibilities of Sub-Committees

Down GAA CUMANN LUTHCHLEAS GAEL ORGANISATION CHART

County Office:
 46 – 48 Main Street
 Castlewellan
 Co. Down
 BT31 9BQ
 T. 028 4377 0880

County Ground:
 Pairc Esler
 Warrenpoint Road
 Newry
 Co. Down
County Colours:
 Red & Black



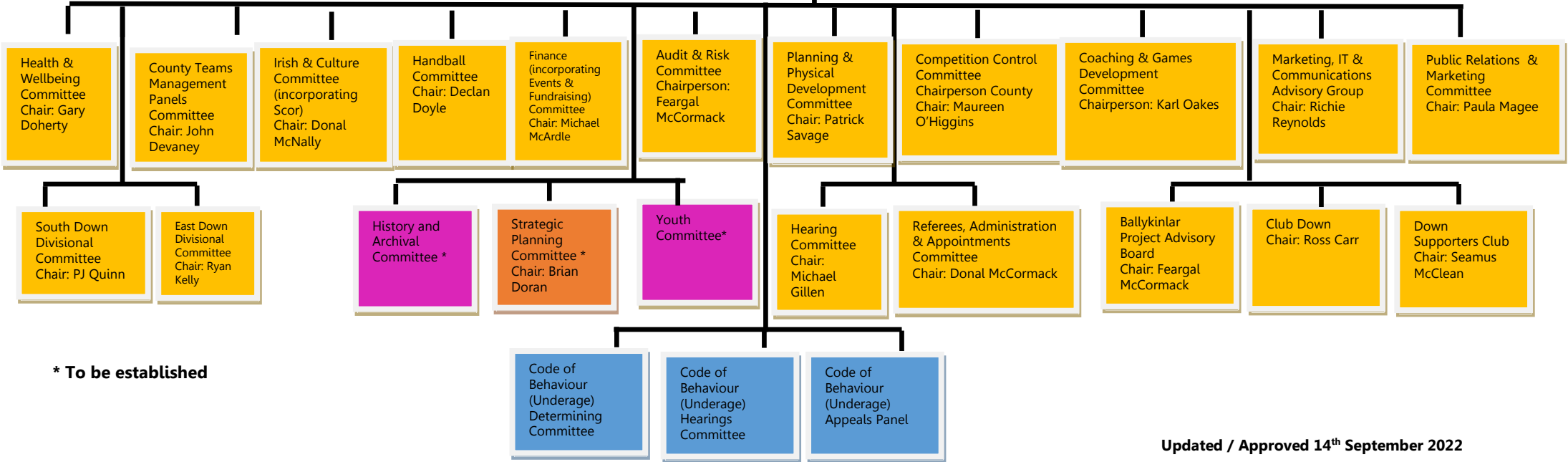
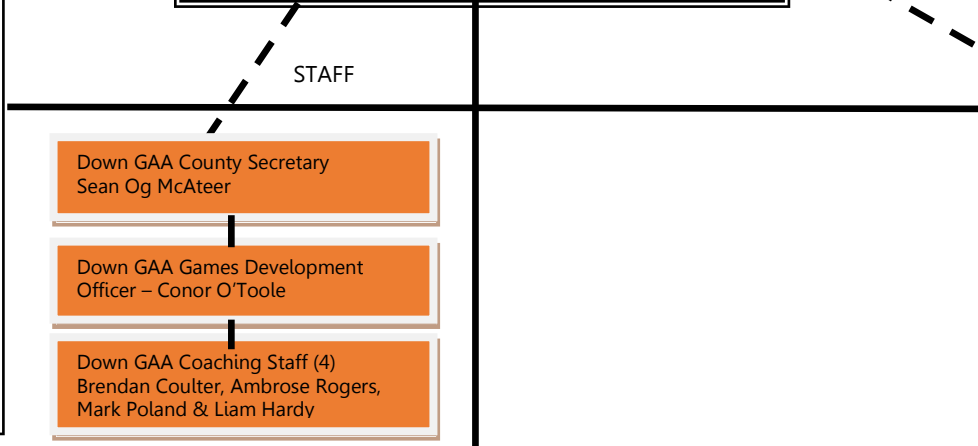
48 Clubs

www.downgaa.net
 Twitter: @OfficialDowngaa
 Facebook: OfficialDownGAA

- COUNTY COMMITTEE EXECUTIVE**
- Chairperson – John Devaney
 - Vice Chairperson – Maureen O'Higgins
 - Secretary – Sean Og McAteer (non-voting)
 - Assistant Secretary – Michael O'Rourke
 - Treasurer – Diarmuid Cahill
 - Assistant Treasurer – Brendan Fitzpatrick
 - PRO – Paula Magee
 - Central Council Delegate – Michael McArdle
 - Ulster Council Delegate 1 – Sean Rooney
 - Ulster Council Delegate 2 – Sean McCashin
 - Hurling Officer – Conor Watson
 - Planning & Training Officer – Patrick Savage
 - Irish and Culture Officer – Donal McNally
 - Coaching Officer – Karl Oakes
 - East Down Chairperson – Ryan Kelly
 - Sown Down Chairperson – PJ Quinn
- OTHER COMMITTEE MEMBERS**
- Club Delegate from each of 48 clubs
 - County Primary School Rep: Brendan Rice
 - **County Post Primary Schools Rep:**
 - County Handball Rep: Sean Magone
 - Down LGFA Rep: Paul Kelly
 - **Down Camogie Rep:**

DOWN COUNTY COMMITTEE
 Elected Annually by 48 Clubs at Annual
 County Convention

- OTHER OFFICERS REPORTING TO COUNTY COMMITTEE**
- County Children's Officer: Fergus Cooper
 - County Health & Wellbeing Officer: Gary Doherty
 - County Hearings Committee Secretary: Joe Ryan
 - County Integration Officer: Sean Rooney
 - County Safety Officer: Sean Og McAteer
 - County Event Controller: Danny Baxenden
 - County Referees Administrator: Sean Rooney
 - County IT Officer: Diarmuid Cahill
 - County Fixtures Analyst: Michael O'Rourke



* To be established